



**Realising professionalism:
Standards for education and training**

Part 2: Standards for student supervision and assessment

Published 17 May 2018

About these standards

Realising professionalism: *Standards for education and training* includes the *Standards framework for nursing and midwifery education*, *Standards for student supervision and assessment* and, programme standards specific to each approved programme.

Our *Standards for education and training* are set out in three parts:

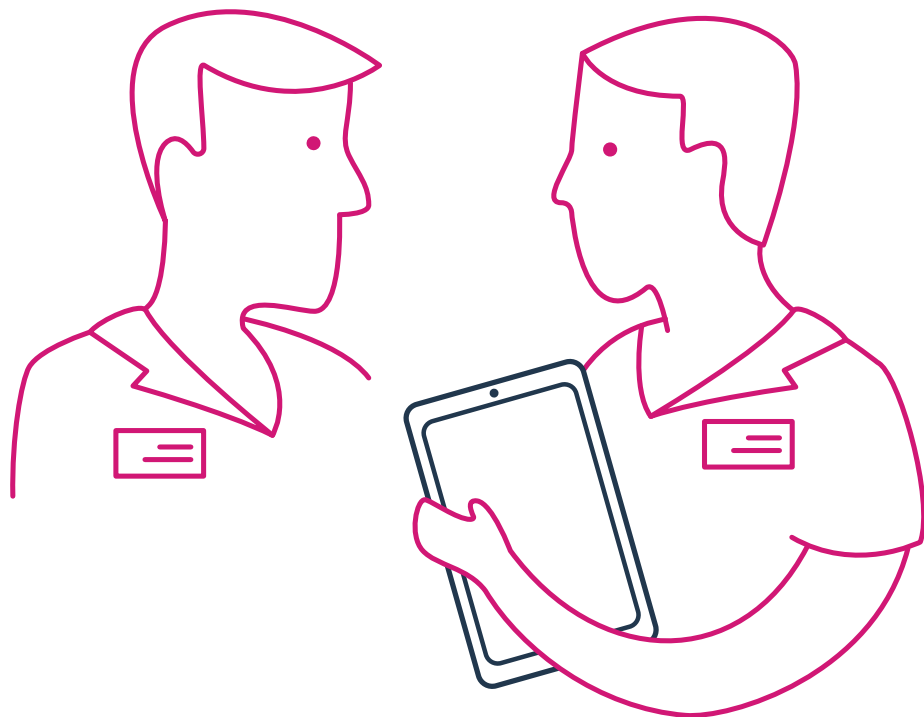
Part 1: Standards framework for nursing and midwifery education

Part 2: Standards for student supervision and assessment

Part 3: Programme standards

- Standards for pre-registration nursing education
- Standards for prescribing programmes

These standards help nursing and midwifery students achieve the NMC proficiencies and programme outcomes. All nursing and midwifery professionals must practise in line with the requirements of [The Code \(2015\)](#), the professional standards of practice and behaviour that nurses and midwives are expected to uphold.



Introduction

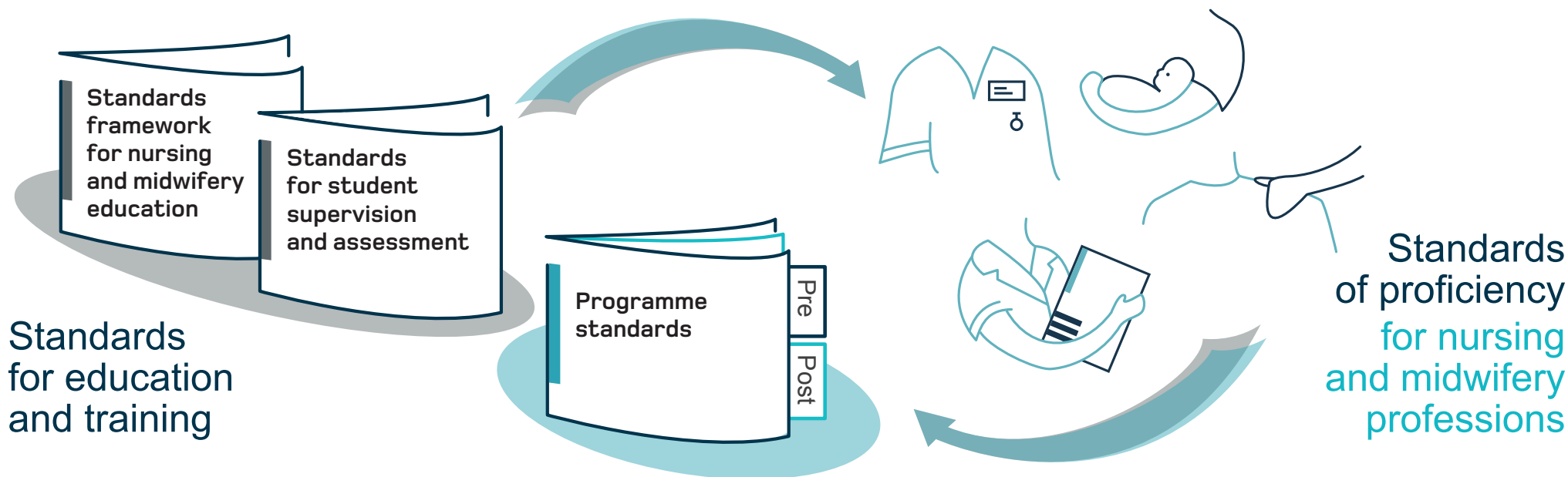
Our *Standards for student supervision and assessment* set out our expectations for the learning, support and supervision of students in the practice environment. They also set out how students are assessed for theory and practice.

Article 15(1) of the Nursing and Midwifery Order 2001 ([‘the Order’](#)) requires the Council to establish standards for education and training which are necessary to achieve the standards of proficiency for admission to the register, as required by Article 5(2) of the Order. The *Standards for student supervision and assessment* are established under the provision of Article 15(1) of the Order.

These standards aim to provide approved education institutions (AEIs) and practice learning partners with the flexibility to develop innovative approaches to nursing and midwifery education, while being accountable for the local delivery and management of approved programmes in line with our standards. Public safety is central to our standards.

Students will be in contact with people throughout their education and it’s important that they learn in a safe and effective way.

The *Standards for student supervision and assessment* apply to all NMC approved programmes and should be read with the NMC *Part 1: Standards framework for nursing and midwifery education* and the programme standards specific to the programme that is being delivered. There must be compliance with all these standards for an education institution to be approved and run NMC approved programmes.



Our *Standards for student supervision and assessment* are set out under the following three headings:

Effective practice learning (section 1)

These standards describe what needs to be in place to deliver safe and effective learning experiences for nursing and midwifery students in practice.

Supervision of students (sections 2 to 5)

Here we describe the principles of student supervision in the practice environment, and the role of the practice supervisor.

Assessment of students and confirmation of proficiency (sections 6 to 10)

In these standards we set out what we require from educators who are assessing and confirming students' practice and academic achievement. We describe the role and responsibilities of the practice assessor and the academic assessor.



Each of the described roles must be in place for education institutions and practice learning partners to meet our standards. Additional roles may be introduced in line with local or national requirements. Programme leaders will confirm the achievement of proficiencies by each student on a programme as set out in *Part 1: Standards framework for nursing and midwifery education* and the programme standards specific to the programme.

The *Standards for student supervision and assessment* are outcome-focused and allow for local innovation in programme delivery; they are designed to work across all programmes and in all settings. Student supervision and assessment can be flexible, provided the education institutions and practice learning partners meet our standards. Students in practice or work-placed learning must be supported to learn without being counted as part of the staffing required for safe and effective care in that setting, this means they are supernumerary. For apprentices, this includes practice placements within their place of employment; this does not apply when they are working in their substantive role. The decision on the level of supervision provided for students should be based on the needs of the individual student. The level of supervision can decrease with the student's increasing proficiency and confidence. Students must be provided with adjustments in accordance with relevant equalities and human rights legislation in all learning environments and for supervision and assessment.

Effective practice learning

All students are provided with safe, effective and inclusive learning experiences. Each learning environment has the governance and resources needed to deliver education and training. Students actively participate in their own education, learning from a range of people across a variety of settings.

1. Organisation of practice learning

Approved education institutions, together with practice learning partners, must ensure that:

- 1.1 practice learning complies with the *NMC Standards framework for nursing and midwifery education*
- 1.2 practice learning complies with specific programme standards
- 1.3 practice learning is designed to meet proficiencies and outcomes relevant to the programme
- 1.4 there are suitable systems, processes, resources and individuals in place to ensure safe and effective coordination of learning within practice learning environments
- 1.5 there is a nominated person for each practice setting to actively support students and address student concerns
- 1.6 students are made aware of the support and opportunities available to them within all learning environments
- 1.7 students are empowered to be proactive and to take responsibility for their learning
- 1.8 students have opportunities to learn from a range of relevant people in practice learning environments, including service users, registered and non-registered individuals, and other students as appropriate
- 1.9 learning experiences are inclusive and support the diverse needs of individual students
- 1.10 learning experiences are tailored to the student's stage of learning, proficiencies and programme outcomes, and
- 1.11 all nurses and midwives contribute to practice learning in accordance with *The Code (2015)*.

Supervision of students

Practice supervision enables students to learn and safely achieve proficiency and autonomy in their professional role. All NMC registered nurses and midwives are capable of supervising students, serving as role models for safe and effective practice. Students may be supervised by other registered health and social care professionals.

2. Expectations of practice supervision

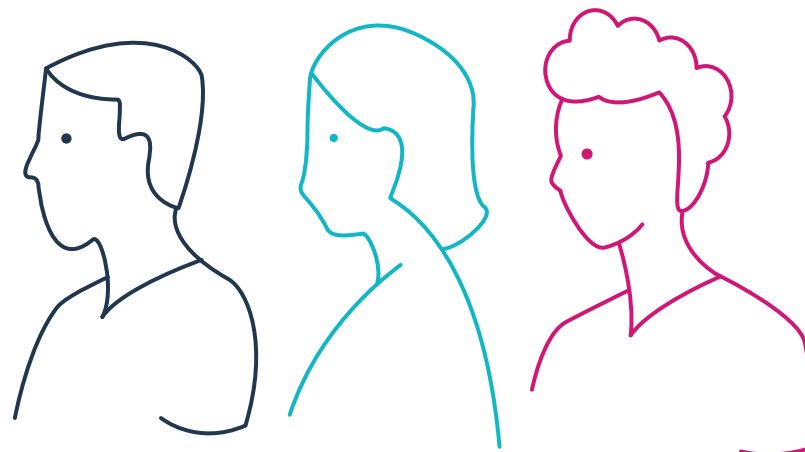
Approved education institutions, together with practice learning partners, must ensure that:

- 2.1 all students on an NMC approved programme are supervised while learning in practice
- 2.2 there is support and oversight of practice supervision to ensure safe and effective learning
- 2.3 the level of supervision provided to students reflects their learning needs and stage of learning
- 2.4 practice supervision ensures safe and effective learning experiences that uphold public protection and the safety of people
- 2.5 there is sufficient coordination and continuity of support and supervision of students to ensure safe and effective learning experiences
- 2.6 practice supervision facilitates independent learning, and
- 2.7 all students on an NMC approved programme are supervised in practice by NMC registered nurses and midwives, and other registered health and social care professionals.

3. Practice supervisors: role and responsibilities

Approved education institutions, together with practice learning partners, must ensure that practice supervisors:

- 3.1 serve as role models for safe and effective practice in line with their code of conduct
- 3.2 support learning in line with their scope of practice to enable the student to meet their proficiencies and programme outcomes
- 3.3 support and supervise students, providing feedback on their progress towards, and achievement of, proficiencies and skills
- 3.4 have current knowledge and experience of the area in which they are providing support, supervision and feedback, and
- 3.5 receive ongoing support to participate in the practice learning of students.



4. Practice supervisors: contribution to assessment and progression

Approved education institutions, together with practice learning partners, must ensure that practice supervisors:

- 4.1 contribute to the student's record of achievement by periodically recording relevant observations on the conduct, proficiency and achievement of the students they are supervising
- 4.2 contribute to student assessments to inform decisions for progression
- 4.3 have sufficient opportunities to engage with practice assessors and academic assessors to share relevant observations on the conduct, proficiency and achievement of the students they are supervising, and
- 4.4 are expected to appropriately raise and respond to student conduct and competence concerns and are supported in doing so.

5. Practice supervisors: preparation

Approved education institutions, together with practice learning partners, must ensure that practice supervisors:

- 5.1 receive ongoing support to prepare, reflect and develop for effective supervision and contribution to, student learning and assessment, and
- 5.2 have understanding of the proficiencies and programme outcomes they are supporting students to achieve.



Assessment of students and confirmation of proficiency

Student assessments are evidence based, robust and objective. Assessments and confirmation of proficiency are based on an understanding of student achievements across theory and practice. Assessments and confirmation of proficiency are timely, providing assurance of student achievements and competence.

6. Assessor roles

Approved education institutions, together with practice learning partners, must ensure that:

- 6.1 all students on an NMC approved programme are assigned to a different nominated academic assessor for each part of the education programme
- 6.2 all students on an NMC approved programme are assigned to a nominated practice assessor for a practice placement or a series of practice placements, in line with local and national policies
- 6.3 nursing students are assigned to practice and academic assessors who are registered nurses with appropriate equivalent experience for the student's field of practice
- 6.4 midwifery students are assigned to practice and academic assessors who are registered midwives

- 6.5 specialist community public health nurse (SCPHN) students are assigned to practice and academic assessors who are registered SCPHNs with appropriate equivalent experience for the student's field of practice
- 6.6 students studying for an NMC approved post-registration qualification are assigned to practice and academic assessors in accordance with relevant programme standards
- 6.7 practice and academic assessors receive ongoing support to fulfil their roles, and
- 6.8 practice and academic assessors are expected to appropriately raise and respond to concerns regarding student conduct, competence and achievement, and are supported in doing so.



7. Practice assessors: responsibilities

Approved education institutions, together with practice learning partners, must ensure that:

- 7.1 practice assessors conduct assessments to confirm student achievement of proficiencies and programme outcomes for practice learning
- 7.2 assessment decisions by practice assessors are informed by feedback sought and received from practice supervisors
- 7.3 practice assessors make and record objective, evidenced-based assessments on conduct, proficiency and achievement, drawing on student records, direct observations, student self-reflection, and other resources
- 7.4 practice assessors maintain current knowledge and expertise relevant for the proficiencies and programme outcomes they are assessing
- 7.5 a nominated practice assessor works in partnership with the nominated academic assessor to evaluate and recommend the student for progression for each part of the programme, in line with programme standards and local and national policies
- 7.6 there are sufficient opportunities for the practice assessor to periodically observe the student across environments in order to inform decisions for assessment and progression
- 7.7 there are sufficient opportunities for the practice assessor to gather and coordinate feedback from practice supervisors, any other practice assessors, and relevant people, in order to be assured about their decisions for assessment and progression
- 7.8 practice assessors have an understanding of the student's learning and achievement in theory
- 7.9 communication and collaboration between practice and academic assessors is scheduled for relevant points in programme structure and student progression
- 7.10 practice assessors are not simultaneously the practice supervisor and academic assessor for the same student, and
- 7.11 practice assessors for students on NMC approved prescribing programmes support learning in line with the NMC *Standards for prescribing programmes*.

8. Practice assessors: preparation

Approved education institutions, together with practice learning partners, must ensure that practice assessors:

- 8.1 undertake preparation or evidence prior learning and experience that enables them to demonstrate achievement of the following minimum outcomes:
 - 8.1.1 interpersonal communication skills, relevant to student learning and assessment
 - 8.1.2 conducting objective, evidence based assessments of students
 - 8.1.3 providing constructive feedback to facilitate professional development in others, and
 - 8.1.4 knowledge of the assessment process and their role within it
- 8.2 receive ongoing support and training to reflect and develop in their role
- 8.3 continue to proactively develop their professional practice and knowledge in order to fulfil their role, and
- 8.4 have an understanding of the proficiencies and programme outcomes that the student they assess is aiming to achieve.

9. Academic assessors: responsibilities

Approved education institutions, together with practice learning partners, must ensure that:

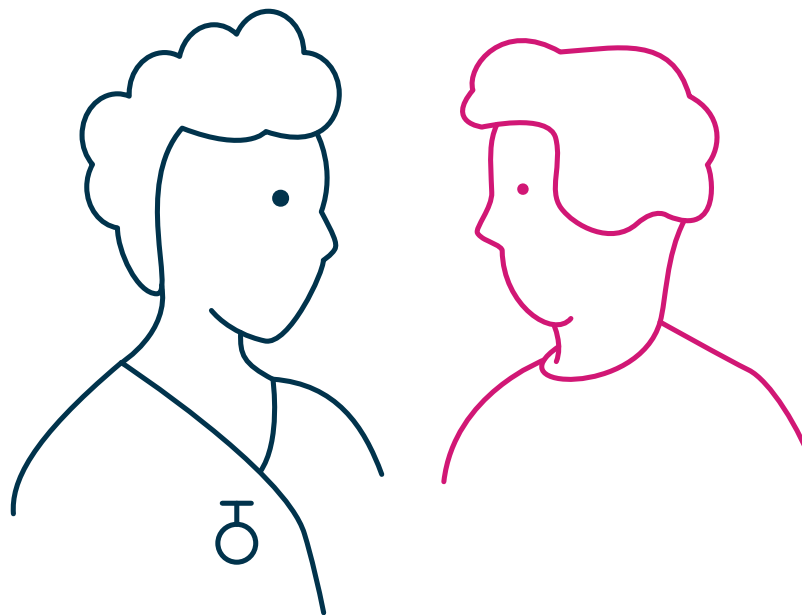
- 9.1 academic assessors collate and confirm student achievement of proficiencies and programme outcomes in the academic environment for each part of the programme
- 9.2 academic assessors make and record objective, evidence-based decisions on conduct, proficiency and achievement, and recommendations for progression, drawing on student records and other resources
- 9.3 academic assessors maintain current knowledge and expertise relevant for the proficiencies and programme outcomes they are assessing and confirming
- 9.4 the nominated academic assessor works in partnership with a nominated practice assessor to evaluate and recommend the student for progression for each part of the programme, in line with programme standards and local and national policies
- 9.5 academic assessors have an understanding of the student's learning and achievement in practice
- 9.6 communication and collaboration between academic and practice assessors is scheduled for relevant points in programme structure and student progression, and
- 9.7 academic assessors are not simultaneously the practice supervisor and practice assessor for the same student.

10. Academic assessors: preparation

Approved education institutions, together with practice learning partners, must ensure that academic assessors:

- 10.1 are working towards or hold relevant qualifications as required by their academic institution and local and national policies
- 10.2 demonstrate that they have achieved the following minimum outcomes:
 - 10.2.1 interpersonal communication skills, relevant to student learning and assessment
 - 10.2.2 conducting objective, evidence based assessments of students
 - 10.2.3 providing constructive feedback to facilitate professional development in others, and
 - 10.2.4 knowledge of the assessment process and their role within it

- 10.3 receive ongoing support and training to reflect and develop in their role
- 10.4 continue to proactively develop their professional practice and knowledge in order to fulfil their role, and
- 10.5 have an understanding of the proficiencies and programme outcomes that the student they confirm is aiming to achieve.



The role of the Nursing and Midwifery Council

What we do

We regulate nurses and midwives in the UK. We exist to protect the public. We set standards of education, training, conduct and performance so that nurses and midwives can deliver high quality care throughout their careers.

We make sure nurses and midwives keep their skills and knowledge up to date and uphold our professional standards. We have clear and transparent processes to investigate nurses and midwives who fall short of our standards. We maintain a register of nurses and midwives allowed to practise in the UK.

These standards were approved by Council at their meeting on 28 March 2018.

